

Looks **smart**. Thinks **smart**.



**OTOSuite
compatible**

MADSEN Itera II

Hearing Assessment Fitting Systems Balance Assessment

Smart solutions to meet your needs

The MADSEN Itera II builds on the achievements of its acclaimed predecessor to set a whole new standard in audiometric performance, simplicity and elegant design. Compact, reliable and versatile, it's the perfect diagnostic audiometer for the busy dispenser or clinician.

Top performance in a stylish cabinet

Continuing our tradition of manufacturing high-quality instrumentation, the Itera II combines great performance with exceptional design and perfect ergonomics. And recognizing that an audiometer is the daily workhorse in your clinic or practice, we have constructed an instrument that doesn't just look good, but is robust and comfortable to use.

The ideal instrument for tone and speech audiometry, Itera II features two independent channels, extensive patient communication facilities, and ipsi/contra lateral masking. And because it's NOAH-compatible, it can be integrated into today's computerized offices and interface with PC-based hearing instrument fitting and dispensing systems.

You define what's best for you

Recognizing that different testing environments have varying requirements, the Itera II is available with a range of options so that you can configure the best solution for your clinic or dispensing practice.

Hearing Instrument Simulator

The options include the most commonly used special tests as well as an *automatic* Hearing Instrument Simulator (HIS) second to none in functionality and ease of use. And for ototoxic monitoring, we also offer the option of high frequency audiometry up to 16 kHz.

By combining these optional functions with the appropriate transducers, you can extend your diagnostic capabilities, now and in the future.





Speech audiometry

Binaural speech testing with completely flexible signal routing (permits ipsi/contra lateral masking).

Itera II fully supports dichotic speech testing and is perfectly suited for central auditory assessment.

Smart rotary knobs

Tactile feedback from rotary knobs means you don't have to take your eyes off the patient when changing frequency and level.

Special tests

Available options include SISI, Stenger, ABLB (Fowler).

Hearing Instrument Simulator (Optional)

Provides you with an excellent tool for counseling patients.

Features automatic setup of settings so that you can start simulation quickly.

Improves accuracy (no manual calculations involved) and presents immediate results.

Every function is at your fingertips

Lights and the display let you see at a glance how the instrument is set up – here AC tone audiometry, using a pure tone signal presented via the right channel, and with NBN masking selected for the left channel.



High frequency air conduction testing

The standard frequency range of the Itera II is 125 Hz to 12.5 kHz. We also offer the option of high frequency testing up to 16 kHz for ototoxic monitoring.



Quick Guides

To make it even easier to learn and use the Itera II, a number of convenient Quick Guides are supplied with the audiometer.



Customize your workflow
 The comprehensive setup options enable you to configure the Itera II according to your preferences, cutting down test time and giving you more "quality time" with your patients.

Easy switching between left and right
 Switch between testing your patient's right or left ear at the press of one button.
 Press twice to enable both left and right (in speech mode).

Internal power supply for CD player
 For speech testing, you don't have to search for an AC plug for your CD player – just connect to the audiometer's rear panel and eliminate a bulky power adapter. Or save batteries.

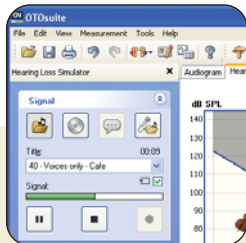
Enhanced patient communication and monitoring system
 The Itera II features improved technology for superior sound and enhanced product quality.
 Talk over and talk back buttons are easily accessible.



Sound field option
 Itera II provides comprehensive options for sound field testing.



Enhanced memory function
 All AC, BC, UCL, MCL and SF thresholds can be stored for both ears.



OTOSuite™ compatible
 Itera II is an integral part of our OTOsuite software platform.

Benefits of PC connectivity



Test results are monitored directly on your PC screen as detailed audiograms with all necessary information.



The MADSEN Itera II can be used either as a stand-alone audiometer or connected directly to a PC using our innovative OTOsuite™ Audiometry software.

There are many benefits to using your PC with MADSEN Itera II. The manual recording of audiograms on paper pads is replaced with electronic recording in a real-time graphic interface. Test results are monitored directly on your PC screen as detailed audiograms with all necessary information. Layout has been designed to provide “information at a glance” and allows you to stay in close visual contact with your patient.

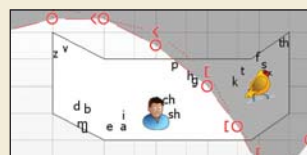
The OTOsuite audiometry module supports aided/unaided speech testing, including a live VU-meter, speech scoring, and

“smart” registration of test results. New features, such as a built-in Masking Assistant™ and visual overlays, ensure high-quality diagnostic testing and patient involvement.

When using MADSEN Itera II with a PC, test data are automatically recorded and stored, which makes it easy to review, file, and re-use diagnostic results in different contexts. Not only will this save you time, it dramatically reduces the risk of errors. Test data can be integrated with electronic medical records via the standard XML data format, stored in or outside of NOAH, or included in reports for third-party sharing. And if you need to print the audiogram, the easy-to-read symbols ensure safe and accurate interpretation.



The Masking Assistant™ alerts whenever masking is recommended at specific frequencies.



Layered graphics assist in counseling patients and relatives on the hearing loss.

Opening up a world of possibilities

MADSEN Itera II is an integral part of our OTOsuite™ software platform.

OTOSuite is GN Otometrics' comprehensive interface for audiometry, counseling, and hearing instrument fitting/verification. It provides you with a uniform entrance to the latest generation of GN Otometrics audiometric solutions. In fact, it's such an important innovation it now forms the backbone for our product development.

OTOSuite makes it possible to couple your MADSEN

Itera II directly with our Visible Speech Mapping system and versatile hearing loss/hearing instrument simulators – excellent tools for visualizing the impact of a patient's hearing loss.

Streamlined workflow

Once you've connected MADSEN Itera II to OTOsuite, audiometric testing, fitting, and verification can be performed quickly and

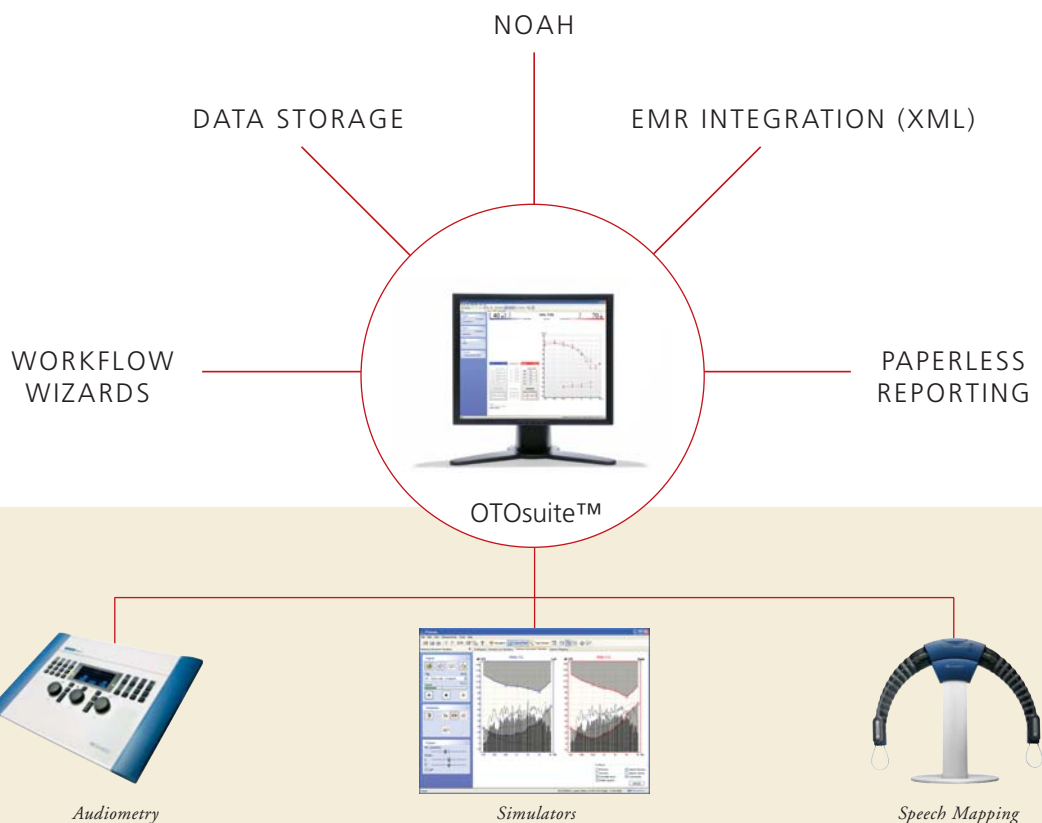
efficiently within the same software framework. Moreover, a convenient single point of entry from NOAH opens up the suite to give you direct access to all compatible equipment. There is no more opening and closing of modules with each test and just a single final storage of data.

The seamless data flow within OTOsuite streamlines your workflow significantly. Your

patients' audiometric data is available instantly for counseling and hearing instrument verification allowing you to move through the diagnostic and verification processes more efficiently.

Counseling

OTOSuite also provides access to hearing-loss and hearing-instrument simulators during both the diagnostic and the verification processes. The simulators help you counsel patients and their families on the effect of a hearing loss by using sound files and visualization.



MADSEN Itera II

Accessories*:

- Headset with 12 kHz matched TDH39 phones
- Bone conductor (vibrator) B71 with headband
- Audiogram pad
- Patient response switch
- User guide
- Power cable
- Monitoring headset with boom mic.
- OTOSuite™ Audiometry software
- HDA 200 headphones for high frequency audiometry
- Gooseneck stereo microphones for H.I.S./and speech
- Sound field speakers
- PA 210 power amplifier
- E-A-RTONE® 3A insert phones

* Which accessories are standard and which are optional varies from country to country - please consult your local GN Otometrics distributor.



Take audiology to your patients

Weighing in at just ten compact pounds or under 5 kg, the Itera II diagnostic audiometer is well-suited for portable use.

pull out the accessories you want to use, plug in and you're ready to start testing.

In its custom carrying case, the Itera II unpacks and is ready to use in less than a minute, with no cords to untangle. Now you can have complete freedom of movement – just open the case,



Today, virtually all computers are networked. So it was only natural to create a full-featured PC audiometer that could also communicate with other devices within and outside the clinic – the new MADSEN Conera.



The Conera builds on proven technology thus ensuring stable and reliable performance. Conera features complete two-channel tone audiometry in HL and SPL together with a wide range of special tests – including SISI, Stenger, ABLB, Weber, Rinne and Hughson-Westlake Auto Threshold screening.

Find out more at www.gnotometrics.com

GN Otometrics is the world's leading manufacturer of hearing and balance instrumentation and software - innovative concepts designed to help healthcare professionals make the best possible decisions. Our solutions range from infant screening applications, audiologic diagnostics and office management software, to balance testing and hearing instrument fitting.

Headquartered in Copenhagen, Denmark, and with a center of development in the United States, we maintain a global network of distributors and subsidiaries. GN Otometrics is part of GN Store Nord.

Distributor:

Hearing Assessment Fitting Systems Balance Assessment

GN Otometrics, Denmark. +45 45 75 55 55. info@gnotometrics.dk
GN Otometrics, North America. 1-800-289-2150. sales@gnotometrics.com
www.gnotometrics.com

GN Otometrics
MADSEN · AURICAL · ICS