

By integrating the instruments in a common user interface, OTOSuite creates a synergy that increases the overall value of your diagnostic and fitting equipment. And the more modules you add to OTOSuite, the greater the benefits.

OTOSuite-compatible instruments:

OTOSuite Immittance:	MADSEN OTOflex
OTOSuite Audiometry:	MADSEN Xeta, MADSEN Itera II
OTOSuite Speech Mapping:	AURICAL Visible Speech
Counseling modules:	Hearing Loss Simulator, Hearing Instrument Simulator
Data links (viewing and reporting):	MADSEN Conera, AURICAL Plus (audiometry)

Minimum requirements:

- Pentium® III 1 GHz processor
- 256 MB RAM
- 200 MB free disk space for installation of the OTOSuite software
- Microsoft® Windows® 2000, Windows® XP (professional) with SP1 or higher, Windows® Vista™
- USB port for connecting accessories
- CD-ROM drive
- 800x600 pixel screen area and 32 bit color
- NOAH 3.1, NOAH 3.1 for ENTs, or higher for NOAH mode operation
- At least 200 Mb free disk space on the C-drive of the computer for installation purposes
- 32 MB graphic memory

GN Otometrics is the world's leading manufacturer of hearing and balance assessment instrumentation and software. Our extensive product portfolio ranges from infant screening applications and audiologic diagnostics, to balance testing and hearing instrument fitting.

As an organization, we are committed to developing innovative, integrated solutions that help healthcare professionals make the best possible decisions. This, in turn, helps our customers improve the overall standard of patient care wherever they are located.

Headquartered in Copenhagen, Denmark, and with a center of development in the United States, we maintain a global network of distributors and subsidiaries. GN Otometrics is part of GN Store Nord.



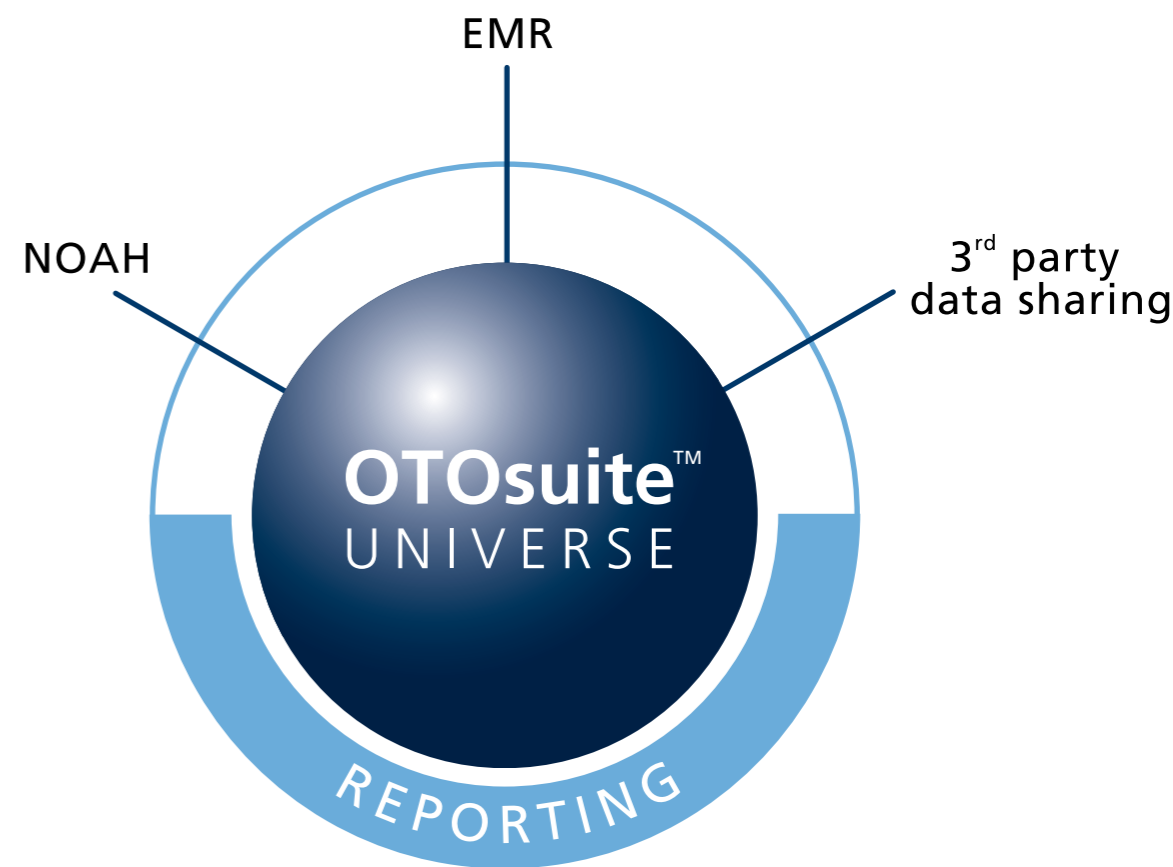
Intelligent Integration™ and OTOSuite™ form the backbone of product development in GN Otometrics.



We envision a world where products work together intuitively and data flows seamlessly between instruments and clinical settings. With PC integration and our OTOSuite software as the universe, we encourage networking by connecting users, instruments, and systems.

Distributor:

Hearing health care integration for seamless and efficient workflow



Specifications are subject to change without notice. Copyright © GN Otometrics 2007/03. 7-26-98400.

OTOsuite™ provides **more time** for patients

OTOsuite™ is a software universe in which your individual diagnostic and fitting tools are integrated. It captures, consolidates, saves, and shares patient measurement data, so you can move freely from one work process to another.

In short, the scene is set for a truly integrated facility with a seamless and highly efficient workflow. OTOsuite is the intelligence behind this integration.

The Navigator allows you to move freely through the diagnostic and verification process.

Save time and energy
OTOsuite provides a convenient single point of entry to Immittance, Audiometry, Speech Mapping, Hearing Loss and Hearing Instrument Simulators, eliminating the need to switch back and forth between individual applications. When OTOsuite is open, you have direct access to measurement data, counseling tools and all compatible equipment. Even if you work through NOAH your workflow becomes more effective.

Because you easily move through the diagnostic and verification processes, there is more time available for individual care or to see more patients.

Familiar interface
OTOsuite features a single, highly intuitive user interface that covers the entire patient-handling process. It is completely straightforward in use and requires less training when new instruments are introduced in your hearing health care facility.

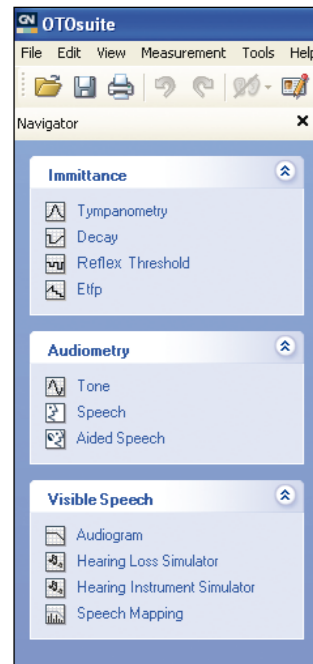
Our goal is simple – help you improve patient care rather than learn individual software systems.

Combined reporting
Measurement data is stored locally or transferred to NOAH, an external database, or a shared medical-record system. OTOsuite's advanced reporting feature is one of the greatest benefits, streamlining your reporting to patients as well as professionals. It allows you to carry out cross reporting, combining measurement data

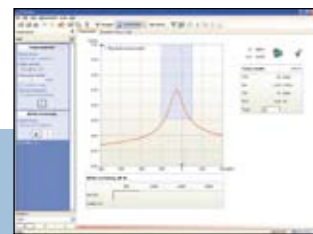
Efficient and professional reporting. The printouts are rich in graphics and combine measurement data from multiple instruments.

from all applications in the OTOsuite universe. And when working through NOAH, OTOsuite also lets you include data from non-GN Otometrics instruments in your report.

OTOsuite comes with a variety of convenient report templates, ready to customize with your name and logo.

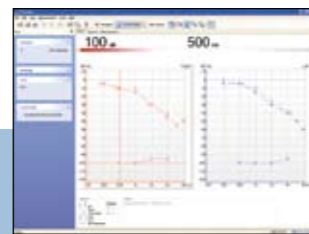


Immittance



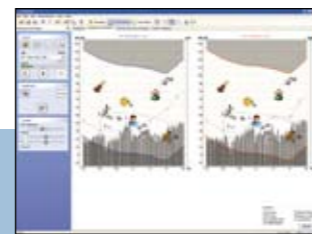
Immittance testing is integrated into the diagnostic and verification process for a seamless workflow and all-inclusive reports.

Audiometry



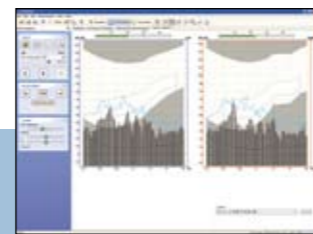
OTOsuite provides enhanced visualization of the audiometric process and facilitates a seamless data flow throughout the diagnostic and verification process.

Simulators



You are provided with access to Hearing Loss and Hearing Instrument Simulators during both the diagnostic and the verification process.

Speech Mapping



OTOsuite integrates your patient's audiometric data directly into the fitting process and its OnTop screen feature works with any fitting software.

